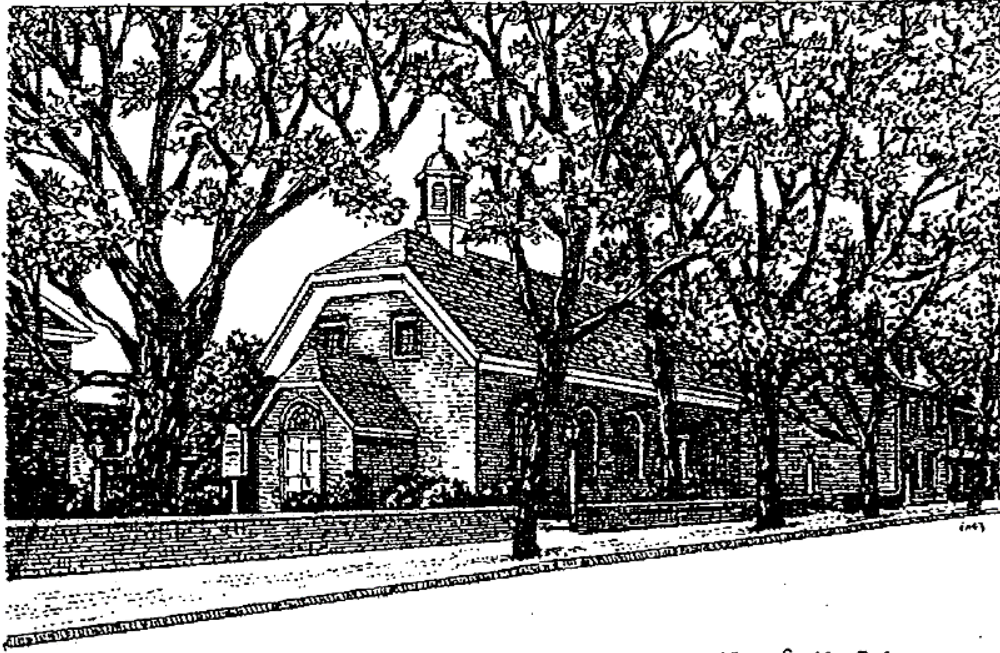


New Castle Presbyterian Church

25 E 2nd Street, New Castle, DE 19720

Phone: (302) 328-3279 | Email: office@newcastlepreschurch.org

www.newcastlepreschurch.org



New Castle Presbyterian Church ~ Built 1707 ~ New Castle, Delaware

Our Mission

New Castle Presbyterian Church offers a nurturing and supportive church community where all are welcomed to join in prayer and song, study and service as all are called to demonstrate understanding, compassion, and acceptance.

By God's Spoken Word and Holy Spirit, we seek to live out the Gospel of the Risen Christ, as we grow spiritually, in strength, and with inclusiveness.

We worship God in simplicity and with clarity; we study God's Word to direct our lives; and we nurture the young and the searchers in our midst.

As a congregation and in cooperation with others,
we engage in service and outreach with the local community and the world.
We work to feed, clothe, and shelter our brothers and sisters
while sharing the selfless and forgiving love of Jesus Christ.

As we have been blessed, we seek to use all that we have to bless others
with this good news of grace and joy.

Welcome to New Castle Presbyterian Church!

Whether you are worshiping with us in-person or joining via livestream, we gather today as a community of faith, seeking and serving the God we know in Jesus Christ. May this worship service remind you that you are God's own and that together we are called to live out God's way of love, justice and peace.

For folks joining us for in-person worship,

A little help - Please see an usher to receive any assistance, including a personal seat cushion.

Restrooms are located in the Education Building, at the far end of the Fellowship Hall.

Sunday School and Nursery will be offered today. Children are invited to begin in worship; worship bags are available at the entrance. Following the Scripture Conversation, babies through four-year-olds may go to nursery; children age Kindergarten through 5th grade may go to Sunday School. All children must have an information form on file. Please see an usher for a copy of the form or if you have any questions. If your family needs to step out of the Meeting House for a time, there is a livestream feed and "pray ground" in the Fellowship Hall.

At the end of worship, please join us for Coffee Hour in the Fellowship Hall.

Worship "code": * = please stand if able **bold** = all speak together

Gentle Reminders:

Please turn off all cell phones.

Parking spaces on 2nd Street in front of the Meeting House are for handicapped parking only.

Please put your bulletins in the blue recycle can at the door as you leave – we recycle!

Office Hours: Monday-Friday 8:30 a.m. – 12:30 p.m.

Pastor Miriam's day of rest is on Mondays.

New Castle Presbyterian Church
Third Sunday after Pentecost

June 9, 2024

10:30 a.m.

GATHER IN GOD'S NAME

Prelude

When I Can Read My Title Clear

arr. Larry Shackley

Bethany Faiz - Piano

Welcome & Words about The Life and Work of the Church
Greeting of Peace

As Jesus greeted his disciples, so let us greet one another:

The peace of Christ be with you!

And also with you!

*Please wave at your neighbors and extend Christ's greeting,
"Peace be with you".*

Steeple Bell

Choral Introit

Call to Worship

We wait for you, O God,

More than those who watch for the morning.

We wait for your steadfast love,

More than those who watch for the morning.

We wait for you to lift the lowly,

More than those who watch for the morning.

We wait for your unexpected grace,

More than those who watch for the morning.

Let us sing of God's holy ways.

Let us sing of God's amazing grace.

*Hymn #649

Amazing Grace

1 A - maz - ing grace, how sweet the sound, that
 2 'Twas grace that taught my heart to fear, and
 3 Through man - y dan - gers, toils, and snares, I
 4 The Lord has prom - ised good to me; his
 5 When we've been there ten thou - sand years, bright

saved a wretch like me! I once was lost, but
 grace my fears re - lieved. How pre - cious did that
 have al - read - y come. 'Tis grace has brought me
 word my hope se - cures. He will my shield and
 shin - ing as the sun, we've no less days to

now am found, was blind, but now I see.
 grace ap - pear the hour I first be - lieved!
 safe thus far, and grace will lead me home.
 por - tion be as long as life en - dures.
 sing God's praise than when we'd first be - gun.

CHOCTAW

Shilombish holitopa ma!
 Ishmminti pulla cha
 hatak ilbusha pia ha
 is pi yukpalashke.

CREEK

Po ya fek cha he thlat ah tet
 ah non ah cha pa kas
 cha fee kee o funnan la kus
 um e ha ta la yus.

NAVAHO

Nizhónítgo joobá diits' a'
 yisdáshútinigí,
 lah yóóiiyá, k'ad
 shénáhoosdzin,
 doo eesh'ít da nt'ée.

As was his custom, the author wrote this hymn to accompany his sermon on 1 Chronicles 17:16–17, preached on January 1, 1773; he called it “Faith’s Review and Expectation.” Much of its current popularity comes from this now-familiar tune, an association that began in 1835.

TEXT: Stanzas 1–4, John Newton, 1772; stanza 5, *A Collection of Sacred Ballads*, 1790; Navaho, Albert Tsosie

MUSIC: *Columbian Harmony*, 1829; arr. Edwin O. Excell, 1910, alt.

Text Phonetic Transcr. Cherokee, Kiowa, Creek, and Choctaw © Oklahoma Indian Missionary Conference;

Phonetic Transcr. Navaho © Albert Tsosie

AMAZING GRACE

CM

Call to Confession

Prayer of Confession

Holy God, when we look to technology or power to save us, remind us of how your grace delivers us. When we would judge our success by quantity or efficiency, teach us of your abundant mercy. For you, O God, make us whole. Forgive us our wandering ways, and lead us home again and again.

(Time for silent prayer...)

Assurance of Pardon

Let us proclaim the Good News together:

In Jesus Christ, we are forgiven! Thanks be to God.

*Response #582

**Glory to God, whose goodness shines on me,
and to the Son, whose grace has pardoned me,
and to the Spirit, whose love has set me free.**

**As it was in the beginning,
is now and ever shall be. Amen.**

World without end, without end. Amen. (sing 3x)

**As it was in the beginning,
is now and ever shall be. Amen.**

Copyright Paul M. Vasile, used by permission

PROCLAIM GOD'S WORD

Anthem

Soon and Very Soon
Bethany Faiz - Piano

Choral Setting by Jack Schrader

*Soon and very soon we are going to see the King.
Hallelujah, hallelujah, we're going to see the King!
No more dying there: we are going to see the King.
Hallelujah, hallelujah, we're going to see the King!*

Scripture Conversation with Children

Prayer for Illumination

O God, you plant seeds of truth in this world and grow noble cedars of wisdom. All the trees of the field know that you are Lord from the highest mountains to the deepest valleys. In the shade of your Word, we gather to rest and be renewed. O Holy Spirit, help us be rooted in your goodness. Amen.

Scripture Lesson

Mark 4:26-34

Page: NT 38

²⁶ He also said, “The kingdom of God is as if someone would scatter seed on the ground ²⁷ and would sleep and rise night and day, and the seed would sprout and grow, he does not know how. ²⁸ The earth produces of itself first the stalk, then the head, then the full grain in the head. ²⁹ But when the grain is ripe, at once he goes in with his sickle because the harvest has come.”

³⁰ He also said, “With what can we compare the kingdom of God, or what parable will we use for it? ³¹ It is like a mustard seed, which, when sown upon the ground, is the smallest of all the seeds on earth, ³² yet when it is sown it grows up and becomes the greatest of all shrubs and puts forth large branches, so that the birds of the air can make nests in its shade.”

³³ With many such parables he spoke the word to them as they were able to hear it; ³⁴ he did not speak to them except in parables, but he explained everything in private to his disciples.

This is the Word of the Lord. Thanks be to God.

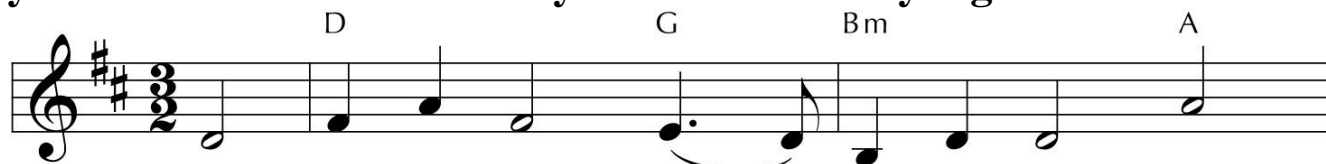
Sermon

“Growing Seasons”

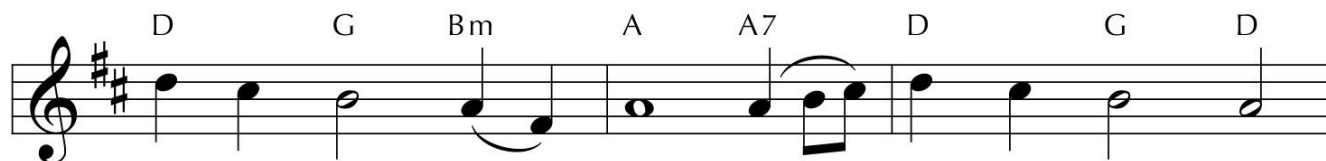
GIVE THANKS TO GOD

***Hymn #817**

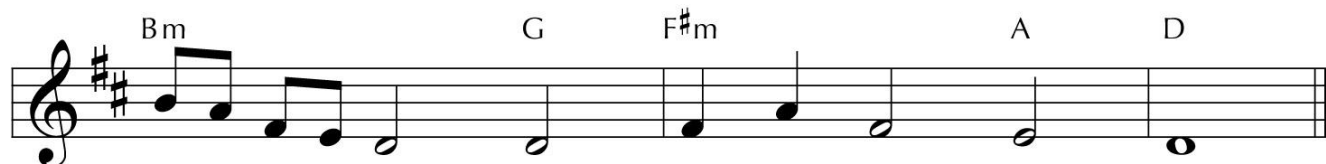
We Walk by Faith and Not By Sight



1 We walk by faith and not by sight; with
 2 We may not touch your hands and side, nor
 3 Help then, O Lord, our un - be - lief; and
 4 And when our life of faith is done, in



gra - cious words draw near, O Christ, who spoke as
 fol - low where you trod; but in your prom - ise
 may our faith a - bound to call on you when
 realms of clear - er light may we be - hold you



none e'er spoke: "My peace be with you here."
 we re - joice and cry, "My Lord and God!"
 you are near and seek where you are found.
 as you are, with full and end - less sight.

Guitar chords do not correspond with keyboard harmony.

Offerings of Tithes and Gifts

Offertory

Deep River

arr. Larry Shackley

Bethany Faiz - Piano

***Response #607**

Praise God from whom all blessings flow;

Praise Christ, all people here below;

Praise Holy Spirit evermore.

Praise triune God, whom we adore. Amen.

***Prayer of Dedication**

Holy God, you are the gardener of all creation. You have sowed seeds of your love in this world and grow them with your faithfulness. We are both your laborers and your harvest; we find our purpose and sustenance in you. May our gifts reflect your calling, may our hearts be attuned to your will, and may our feet follow you into the world, through Jesus, the Word become flesh. Amen.

Prayers of the People

The Lord's Prayer

Our Father, who art in heaven, hallowed be thy name.

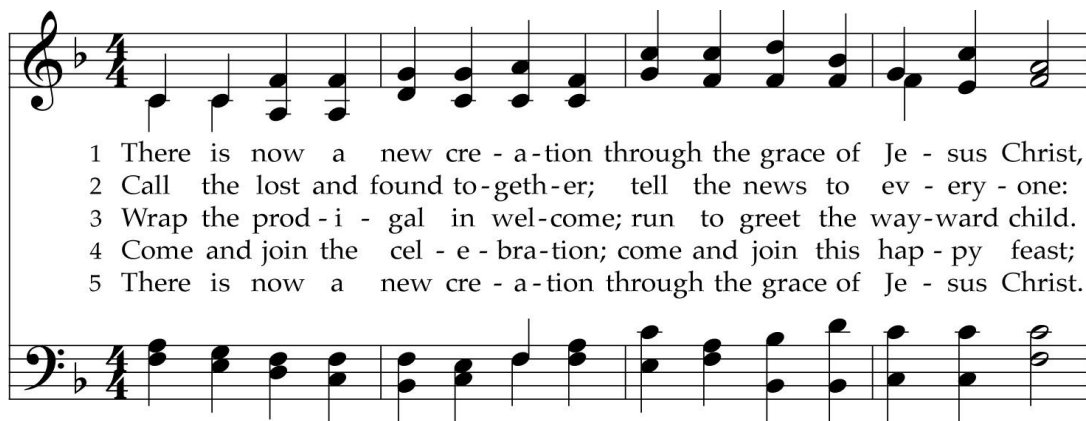
Thy kingdom come, thy will be done, on earth as it is in heaven.

Give us this day our daily bread; and forgive us our debts, as we forgive our debtors; and lead us not into temptation, but deliver us from evil. For thine is the kingdom and the power and the glory, forever. Amen.

GO IN GOD'S NAME

***Hymn #774**

There Is Now a New Creation



1 There is now a new cre - a - tion through the grace of Je - sus Christ,
2 Call the lost and found to - geth - er; tell the news to ev - ery - one;
3 Wrap the prod - i - gal in wel - come; run to greet the way - ward child.
4 Come and join the cel - e - bra - tion; come and join this hap - py feast;
5 There is now a new cre - a - tion through the grace of Je - sus Christ.



peace and rec - on - cil - i - a - tion with the God of end - less life.
now the past is gone for - ev - er and a new life has be - gun.
All is fin - ished and for - giv - en; let us now be rec - on - ciled.
Je - sus makes an in - vi - ta - tion to the great - est and the least.
Sing, with thanks and ad - o - ra - tion, to the God of end - less life!

***Charge and Benediction**

Choral Benediction

Steeple Bell

Postlude

I'll Fly Away Medley
Bethany Faiz - Piano

arr. Mark Hayes

Please remain seated through the Postlude. As you exit, you may recycle your bulletin in the basket at the door. Join us after worship for Coffee Hour in the Fellowship Hall

Thank you for serving today:

Worship Leader: Jane Fouracre

Counters: Rob Barry/Mike Smith

Ushers: Lindy & Sandy Ballance

Coffee Hour: Church Picnic hosted by Session

Nursery: Chris Fagles/Mariellen Edinburg

Sunday School: Mallory Mackie/Stephanie Foltz

Today we remember in the Special Gifts Memorial Case:

Mary Ann Register
1816-1854

Ruth K. Johnson
1898-1988



SIGN UP TO VOLUNTEER ON A SUNDAY MORNING

We are in need of ushers and worship leaders in June.

Please sign up today: <https://www.newcastlepreschurch.org/on-line-signups>

CHRISTIAN EDUCATION – SUMMER UPDATES

Sunday School wraps up today, but Nursery care will continue through the summer. If you're interested in serving as a Nursery volunteer, please contact Molly Shaw - mollypaige1@aol.com.

CONGREGATIONAL MEETING + CHURCH PICNIC – TODAY

Join us following worship today in the Meeting House for our Annual Congregational Meeting. We'll elect officers for the Class of 2027 and also elect the Trustees of the Corporation. Copies of the meeting docket and nominees' biographies are available from an usher.

After our business concludes, we'll gather for our annual picnic to mark the end of Sunday School and Choir for this programming year. NCPC Elders will fire up the grills to cook hamburgers and hotdogs, and we'll have cake to celebrate all who had milestone birthdays this past year. Come and celebrate God's goodness!

VACATION BIBLE SCHOOL SIGN-UP & PLANNING

Put on Love is our VBS for Pre-K through 12 on Sunday, July 14 from 4-7 p.m.

We'll hear Paul's words to the Colossians to wear Christ-like compassion, kindness, and love. Register by July 7:

<https://www.newcastlepreschurch.org/vacation-bible-school>

We have a great group of volunteers to help teach, lead music/ games/ crafts, help serve food, and clean-up. We are still looking for a couple more volunteers, especially to help shepherd the children. Our next planning meeting will be via Zoom on Tuesday, June 25 at 7:30 p.m.; email Pastor Miriam for the link!

We are looking for some donated supplies to make the evening super fun! This week's ask: do you have an old pair of funky shoes that could be used for a "Walk a Mile in Someone Else's Shoes" relay race? Let Kris Stone know - kris@worldstones.net

HABITAT WORK DAY – JUNE 22

Limited volunteer spaces are available to join with New Castle Presbytery churches for a Habitat Eastside Wilmington Work Day. Details are located in the May Newsletter. Must be 16 years of age, complimentary lunch will be provided by Concord PC, and work clothes required to participate in the build. Although the registration deadline is 6/17/24, we intend to have the ten-person volunteer slots filled quickly, so register today!

PRIDE WEEKEND IN NEW CASTLE – JUNE 29

Mark your Calendars for some exciting events to celebrate Pride Month in New Castle! On Saturday, June 29, a Drag Queen Brunch will be offered at Cabernet Candles at 410 Delaware Street.

New Castle Presbyterian will host a creative event of spoken-word, visual art and music featuring artist Phoenix from Riverfront Ministries and pianist-extraordinaire Michael Hunter at 3pm. This will be followed by a reception in the CE Building. We are asking the congregation to donate either finger foods or set-up/clean-up time for the 4pm reception. We'd like to keep it simple; similar to things that are served for coffee hour. Please sign up if you can help; there will be a sign-up sheet in the CE building. Please see either Diana Reilly or Phee Price with questions.

If you'd like to be a part of planning these events, contact Phee Price at pheeprice@gmail.com

FRIENDSHIP HOUSE – SCHOOL UNIFORM DONATIONS

This May and June, we have the opportunity to donate to one of Friendship House's greatest needs: School uniforms. Many schools in Delaware require them, putting a burden on students and their families. In 2023, the Clothing Bank was able to provide over 10,000 uniform items to 18 public schools in Delaware. Donations can be made online through the Friendship Clothing Bank website at: <https://www.friendshiphousedel.org/delaware-homeless/our-programs/clothing-bank/school-uniform-initiative/>

Go to the right side of the page and select from three different donation registries (Target, Amazon, and French Toast). Clothing items will then be delivered directly to the Clothing Bank. Thank you for assisting with this great cause. If you have any questions, please contact Scott Selheimer at selheime@udel.edu or 302-368-8639.

Prayer List:

To place a name on the confidential Prayer Chain, contact Susan Flook,
302-328-7346 suzieflook@hotmail.com

Continuing Care Homes / Hospitals:

Rod Denison

Coral Springs Healthcare Ctr.
505 Greenbank Rd., Room C7
Wilmington, DE 19808

Linda Twyford

New Castle Nursing & Rehab
32 Buena Vista Dr,
New Castle, DE 19720
(302) 328-2580

David Lioi

Shipley Living
2723 Shipley Road
Healthcare Ctr Rm. 505
Wilmington, DE 19808

At Home:

Kathy Griffin-Graham

323 Oregon Avenue
New Castle, DE 19720
(302) 324-9944

Anita Johnson

Cokesbury
724 Loveville Road,
HealthCare Rm 2006
Hockessin, DE 19707

Robert Lindfors

202 Brylgon Ave.
New Castle, DE 19720
(302) 328-5369

Mary Duncan

1323 Richard's Alley
Wilmington, DE 19806
(302) 888-0282

Judy Hentkowski

128 E. 2nd Street
New Castle, DE 19720
(302) 328-8266

On Assignment with the Coast Guard:

George Spock

USCGC Scheuerman
PSC 851 P.O. Box 11620
FPO AE, 09834

On Assignment with the Air Force:

James Boyle

1150 Bole Street, Unit 54
JBPHH, HI 96860

This Week's Schedule

SUNDAY	06/09	10:30am	In-Person & Live Stream Worship
		11:30am	Congregational Meeting
		11:45am	Church Picnic
Thursday	06/13	7:00pm	Congregational Life & Membership Meeting
Saturday	06/15	8:00am	Tai Chi
SUNDAY	06/16		FATHER'S DAY
		10:30am	In-Person & Live Stream Worship
		11:30am	Sidewalk Coffee Hour
		6:00pm	Community Open Mic Night

*Miriam will be out of the office at Engel Preaching Institute @ Princeton through 6/14
Kris will be on vacation Monday, June 10 – Friday, June 14
(phones will be covered through the week)*

All printed music & performances are covered under

OneLicense #A-720755 Used by permission

New Castle Presbyterian Church

25 E. 2nd Street
New Castle, DE 19720

Phone: (302) 328-3279

www.newcastlepreschurch.org

Fax: (302) 328-5670

Rev. Miriam Foltz, Pastor - pastor@newcastlepreschurch.org

Kris Krawczyk, Admin. Assistant - office@newcastlepreschurch.org

Mallory Mackie, Sunday School Coord.

Eileen Larkin, Dir. of Music

Dan Knox, Treasurer

Minerva Lermond, Dir. of Handbells

Shirley Knox, Recording Secretary

Bethany Faiz, Accompanist

SESSION

2024	2025	2026
Rob Barry	Melissa Boris	Cynthia Beam
Chris Fagles	Jennifer Dunham	Peter McCurdy
Greg Fogarty	Connie Reese	OPEN
Scott Selheimer		

Session meets the 1st Tuesday of the month

DEACONS

2024	2025	2026
Susan Fogarty	Toni Marley	Lindy Ballance
Julia Spock	Janet Spring	Liz Toto
Sandy Wilson		

Deacons meet the 2nd Sunday of the month

TRUSTEES

2024	2025	2026
Lyn Briggs	Marshall Freund	Mary Fontinha
Gary Graham	Mike Smith	Gail Seitz
Barbara Whisman		

Trustees meet the 3rd Monday every other month (Sept/Nov/Jan/Mar/May)

