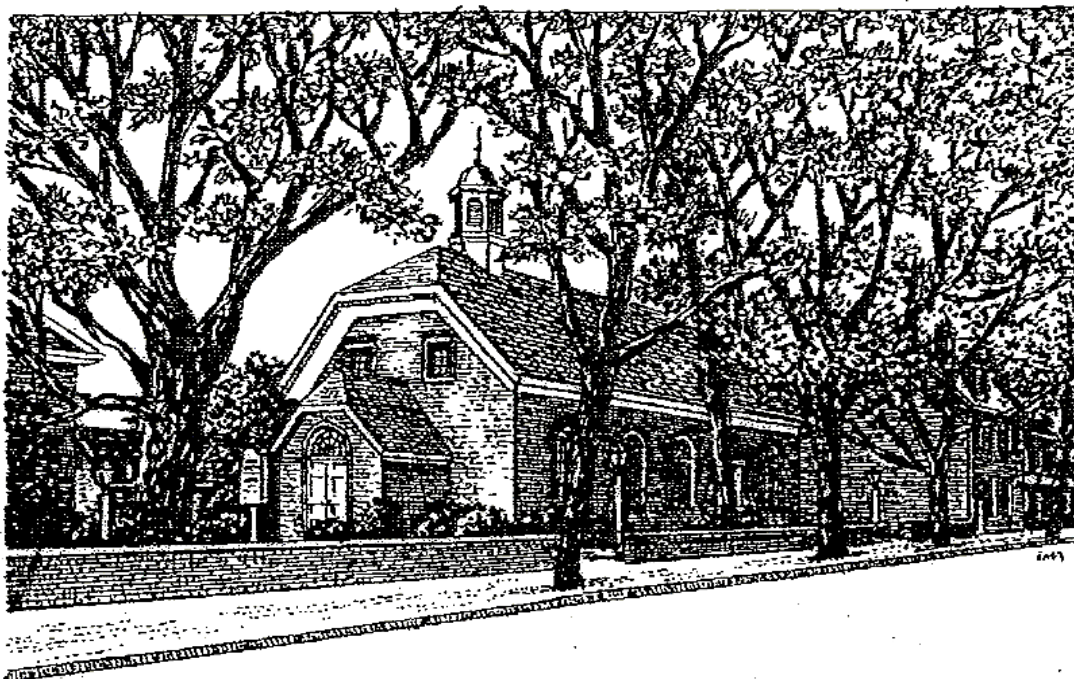


New Castle Presbyterian Church

25 E 2nd Street, New Castle, DE 19720

Phone: (302) 328-3279 | Email: office@newcastlepreschurch.org

www.newcastlepreschurch.org



New Castle Presbyterian Church ~ Built 1707 ~ New Castle, Delaware

Our Mission

New Castle Presbyterian Church offers a nurturing and supportive church community where all are welcomed to join in prayer and song, study and service as all are called to demonstrate understanding, compassion, and acceptance.

By God's Spoken Word and Holy Spirit, we seek to live out the Gospel of the Risen Christ, as we grow spiritually, in strength, and with inclusiveness.

We worship God in simplicity and with clarity; we study God's Word to direct our lives; and we nurture the young and the searchers in our midst.

As a congregation and in cooperation with others, we engage in service and outreach with the local community and the world. We work to feed, clothe, and shelter our brothers and sisters while sharing the selfless and forgiving love of Jesus Christ.

As we have been blessed, we seek to use all that we have to bless others with this good news of grace and joy.

Welcome to New Castle Presbyterian Church!

Whether you are worshiping with us in-person or joining via livestream, we gather today as a community of faith, seeking and serving the God we know in Jesus Christ. May this worship service remind you that you are God's own and that together we are called to live out God's way of love, justice and peace.

For folks joining us for in-person worship,

A little help - Please see an usher to receive any assistance, including a personal seat cushion.

Restrooms are located in the Education Building, at the far end of the Fellowship Hall.

Children are always welcome in worship! Worship Bags and children's bulletins are available at the back of the Meeting House. If your family needs to step out of the Meeting House for a time, there is a livestream feed and "pray ground" in the Fellowship Hall.

At the end of worship, please join us for sidewalk fellowship on 2nd Street.

Worship "code": * = please stand if able **bold** = all speak together

Gentle Reminders:

Please turn off all cell phones.

Parking spaces on 2nd Street in front of the Meeting House are for handicapped parking only.

Please put your bulletins in the blue recycle can at the door as you leave – we recycle!

Office Hours: Monday-Friday 8:30 a.m. – 12:30 p.m.

Pastor Miriam's day of rest is on Mondays.

**New Castle Presbyterian Church
Fourteenth Sunday after Pentecost**

September 3, 2023

10:30 a.m.

GATHER IN GOD'S NAME

Prelude

No, Not One!
Bethany Faiz - Piano

arr. Tom Fettke

**Welcome & Words about The Life and Work of the Church
Greeting of Peace**

As Jesus greeted his disciples, so let us greet one another:
The peace of Christ be with you!

And also with you!

*Please wave at your neighbors and extend Christ's greeting,
"Peace be with you".*

Steeple Bell

Call to Worship

Stop and listen; turn and see!

The Lord our God is with us.

This place is holy ground.

The Lord our God is with us.

The God of our ancestors is here.

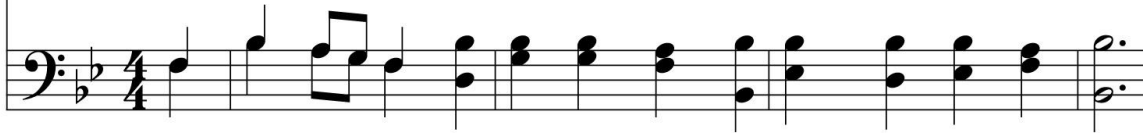
Let us worship the Great I Am!

***Hymn #805**

Come Sing to God



1 Come sing to God, O liv - ing saints; sing prais - es to God's name.
2 In my suc-cess I felt se - cure; how good you've been to me.
3 What good is gained by my dis - grace, what prof - it in de - feat?
4 You change my grief to joy-filled dance; my sor - rows you de - stroy.



God's an - ger is not per - ma - nent; God's love will nev - er wane.
I said that this is my own work, as - crib - ing all to me.
My grave can - not con - fess your name, nor praise for you re - peat.
In faith - ful - ness you hear my cry and fill my life with joy.



Though tears may tar - ry for the night with sighs of deep - est pain,
But when you turned a - side your face, my life was filled with fears.
Now hear, O Lord, my plain - tive cry; be mer - ci - ful to me.
And so to you my heart shall sing; my voice your good - ness raise.



yet joy comes with the morn - ing sun, a peace that is not vain.
I begged for help; to you I cried with loud and bit - ter tears.
Ac - cept my long - ing heart's re - quest and from death set me free.
You are my God, for - ev - er - more. My life shall sing your praise.



In effect, the first stanza of this paraphrase of Psalm 30 states the general truth that has been learned from the personal experience described in the last three stanzas. It is set to an 18th-century German tune brought into use with English hymnody in the 19th century.

Call to Confession

Prayer of Confession

O Lord, sometimes it sounds too hard. Deny ourselves? Take up our crosses and lose our lives?

Forgive us, Savior, but we'd rather you do it for us.

Forgive us, Christ, but we are overwhelmed by what you ask of us.

We long to see you come in glory, but fear the road we must take.

Have mercy on our weakness. Be patient with our stumbling. Do not leave us behind, even when we are slow to follow. Lead us in your ways of peace... *(Time for silent prayer.)*

Assurance of Pardon

Let us proclaim the Good News together:

In Jesus Christ, we are forgiven! Thanks be to God.

***Response #582**

**Glory to God, whose goodness shines on me,
and to the Son, whose grace has pardoned me,
and to the Spirit, whose love has set me free.**

**As it was in the beginning,
is now and ever shall be. Amen.**

World without end, without end. Amen. (sing 3x)

**As it was in the beginning,
is now and ever shall be. Amen.**

Copyright Paul M. Vasile, used by permission

PROCLAIM GOD'S WORD

Prayer for Illumination

Holy God, we give you thanks that you speak to us and reveal yourself to us through the gift of your word. Help us to heed your voice, that we may follow you faithfully and honor your glorious name, through Jesus Christ we pray, Amen.

²¹ From that time on, Jesus began to show his disciples that he must go to Jerusalem and undergo great suffering at the hands of the elders and chief priests and scribes and be killed and on the third day be raised. ²² And Peter took him aside and began to rebuke him, saying, “God forbid it, Lord! This must never happen to you.” ²³ But he turned and said to Peter, “Get behind me, Satan! You are a hindrance to me, for you are setting your mind not on divine things but on human things.”

²⁴ Then Jesus told his disciples, “If any wish to come after me, let them deny themselves and take up their cross and follow me. ²⁵ For those who want to save their life will lose it, and those who lose their life for my sake will find it. ²⁶ For what will it profit them if they gain the whole world but forfeit their life? Or what will they give in return for their life?

²⁷ “For the Son of Man is to come with his angels in the glory of his Father, and then he will repay everyone for what has been done. ²⁸ Truly I tell you, there are some standing here who will not taste death before they see the Son of Man coming in his kingdom.”

This is the Word of the Lord. Thanks be to God.

Scripture Conversation with Children

Sermon

Criss-Cross Applesauce

GIVE THANKS TO GOD

*Hymn #515

I Come with Joy

Capo 3: (D) (G) (A) (D) (Bm)
F B \flat C F Dm

1 I come with joy, a child of God, for - giv - en, loved, and
 2 I come with Chris-tians far and near to find, as all are
 3 As Christ breaks bread and bids us share, each proud di - vi - sion
 4 The Spir - it of the ris - en Christ, un - seen, but ev - er
 5 To - geth - er met, to - geth - er bound by all that God has

(Asus) (Am) (G) (F#m) (D)
Csus Cm B \flat Am F

free, the life of Je - sus to re - call, in
 fed, the new com - mu - ni - ty of love in
 ends. The love that made us, makes us one, and
 near, is in such friend - ship bet - ter known, a -
 done, we'll go with joy, to give the world the

(Em) (D/F#) (G) (A) (Am7) (D)
Gm F/A B \flat C Cm7 F

love laid down for me, in love laid down for me.
 Christ's com - mu - nion bread, in Christ's com - mu - nion bread.
 strang - ers now are friends, and strang - ers now are friends.
 live a - mong us here, a - live a - mong us here.
 love that makes us one, the love that makes us one.

Guitar chords do not correspond with keyboard harmony.

This text affirms that Christian unity is not achievement but gift, one renewed each time we gather for the Lord's Supper. Each of us enters as an "I" and leaves as part of "we." The unadorned language of this text is well matched to the simple shape note tune that sets it here.

Offerings of Tithes and Gifts

Offertory

The Gift of Love

arr. Hal H. Hopson

Bruce & Lisa Raker – Solo Vocalists

Bethany Faiz - Piano

***Response #607**

Praise God from whom all blessings flow;

Praise Christ, all people here below;

Praise Holy Spirit evermore.

Praise Triune God, whom we adore. Amen.

***Prayer of Dedication**

O God, author and giver of all things, plant in our hearts the love of your name. Increase in us deep faithfulness, and nourish us with all goodness. May these offerings bring forth in your world the fruit of the Spirit, that love, joy, and peace would abide. Amen.

Communion and Prayers of the People

Invitation

The Lord be with you. **And also with you.**

Lift up your hearts. **We lift them up to the Lord.**

Let us give thanks to the Lord our God.

It is right to give our thanks and praise.

Prayer of Great Thanksgiving

The Lord's Prayer

Our Father, who art in heaven, hallowed be thy name.

Thy kingdom come, thy will be done, on earth as it is in heaven.

Give us this day our daily bread; and forgive us our debts,

as we forgive our debtors; and lead us not into temptation, but

deliver us from evil. For thine is the kingdom and the power and the glory, forever. Amen.

Words of Institution

Partaking

*Please come forward to receive the sacrament by intinction,
dipping your piece of bread into the cup.*

Prayer

GO IN GOD'S NAME

*Hymn #726

Will You Come and Follow Me

Capo 3: (D) (A7) (Bm) (Em7) (Asus) (A)
F C7 Dm Gm7 Csus C

- 1 "Will you come and fol - low me if I but call your name?
- 2 "Will you leave your-self be-hind if I but call your name?
- 3 "Will you let the blind - ed see if I but call your name?
- 4 "Will you love the 'you' you hide if I but call your name?
- 5 Lord, your sum-mons ech - oes true when you but call my name.

(D) (A7) (Bm) (Em7) (G) (D)
F C7 Dm Gm7 B^b F

Will you go where you don't know and nev - er be the same?
Will you care for cruel and kind and nev - er be the same?
Will you set the pris-oners free and nev - er be the same?
Will you quell the fear in - side and nev - er be the same?
Let me turn and fol - low you and nev - er be the same.

(Em7) (G) (F#m7) (G) (Asus)(A)
Gm7 B^b Am7 B^b Csus C

Will you let my love be shown; will you let my name be known;
Will you risk the hos - tile stare should your life at-tract or scare?
Will you kiss the lep - er clean, and do such as this un - seen,
Will you use the faith you've found to re-shape the world a - round,
In your com - pa - ny I'll go where your love and foot-steps show.

(D) (A7) (Bm) (Em7) (G) (D)
F C7 Dm Gm7 B^b F

will you let my life be grown in you and you in me?"
Will you let me an - swer prayer in you and you in me?"
and ad - mit to what I mean in you and you in me?"
through my sight and touch and sound in you and you in me?"
Thus I'll move and live and grow in you and you in me.

The first four stanzas of this ballad-like hymn are understood to be in the voice of Christ, with the fifth reflecting the individual singer's response. Created for this traditional Scottish tune, the text was written to mark the conclusion of a youth volunteer's time of ministry.

***Charge and Benediction**
Steeple Bell

Postlude

Ye Servants of God
Bethany Faiz - Piano

arr. Lloyd Larson

*Please remain seated through the Postlude.
As you exit, you may recycle your bulletin in the basket at the door.*

Thank you for serving today:

Worship Leader: Ray Snyder Counters: Rob Barry & Barbara Whisman
Communion: Melissa Boris
Ushers: Jim & Susan Flook

Today we remember in the Special Gifts Memorial Case:

Gregory L. Mattei
1957-1974

Mildred Mathew
1915-2012



SIGN UP TO VOLUNTEER ON A SUNDAY MORNING

We are in need of ushers and worship leaders in the coming weeks.

Please sign up today: <https://www.newcastlepreschurch.org/on-line-signups>

Coffee Hour fellowship resumes next Sunday, so we're in need of volunteers for First Sunday coffee hours. Sign up in the Fellowship Hall!

CHILDREN IN WORSHIP

Children are welcome to remain in the Meeting House during worship. (Worship bags and children's bulletins are available in the Narthex.) If families need to step out, a "pray ground" and livestream are available in the Fellowship Hall.

SUNDAY SCHOOL & NURSERY RESUME NEXT SUNDAY



Sunday School and Nursery care will resume on September 10, 2023. If you are interested in volunteering, please contact:
For Sunday School: Melissa Boris & Stephanie Foltz
For Nursery: Molly Shaw.

BLESSING OF THE BACKPACKS - SEPTEMBER 10

During our Scripture Conversation next Sunday, we will bless our school bags (and work bags!) at the start of a new year of learning. Bring your backpacks, diaper bags, briefcases, tote bags, or whatever bag with you to worship!

GIFTS OF LOVE COLLECTION - SEPTEMBER 10

In Romans 12:13, Paul urges us to “share with God’s people who are in need.” Our quarterly Gifts of Love collections go to support the ministry of the St. Vincent dePaul Society at St. Peter's. We come together to assist our neighbors in need to pay for overdue utility bills, oil deliveries, rent, and mortgage payments. Make a gift through one of our white envelopes next Sunday to share with God's people who are in need.

CLOTHING DRIVE IN SEPTEMBER

September marks our popular annual clothing drive for Friendship House. Refresh your life (and your closets!) by donating your new or gently used, clean clothing and school uniforms to Friendship House. Donations can be brought to the church and left in the second room on the right on the second floor of the CE building, or if that's difficult, in the entryway. We'll collect them all through the month of September. Let's see those bags pile up!



FOR THE BEAUTY OF THE EARTH - FALL RETREAT 2023

Come enjoy and worship in God's beautiful creation with NCPC at [Pecometh Camp](#) from Friday, September 22 through Sunday, September 24. (Join us for part of the time or the whole weekend; read the brochure for more details!) Congregational Life has reserved space for tent camping, a pavilion for group meals, and worship space for Sunday morning. Cabins and nearby hotels are available for personal reservation too! RSVP ASAP by filling out this form: <https://forms.gle/ywMXhBo9fqeDnvH97>.

MENTORING THIS FALL – A CHILD NEEDS YOU

Creative Mentoring provides the needed training for you to make a difference in a child's life. Mentoring involves only half an hour to an hour once a week with a child who may be in need of only a caring adult to listen, play games, talk to or help with school work or organizational skills. This is not tutoring, it's more of an opportunity for a child to connect with a caring adult. If you are interested in becoming a mentor, email Candy Dunson - ddunson2@aol.com.

COVENANT CONVERSATION – NOV 11

Members of New Castle Presbytery are organizing a "Covenant Conversation" event to support the people and congregations of our presbytery as we seek to become more authentic and creative in our welcome, affirmation and support of LGBTQIA+ people.

The date has been set for Saturday, November 11, 9 a.m. to 4 p.m. at The Presbyterian Church of Dover. Let Pastor Miriam know if you plan to attend and sign up today:

<https://covnetpres.org/event/covenant-conversation-new-castle-presbytery/>



MAUI ASSISTANCE

Our Church has made a donation to the Presbyterian Disaster Fund (PDA) in response to the fires in Hawaii. PDA is disbursing funds to address emergency needs (food, water, shelter, medicine) and will continue to be present through the long-term recovery phase. If you would like to make an individual donation designate your gift to DR000165 and send to:

Presbyterian Disaster Assistance Presbyterian Church (USA) P.O. Box 643700 Pittsburgh, PA 15264-3700

MEALS ON WHEELS

In Matthew 25, Christ calls us to feed the hungry and visit the sick, and through Meals on Wheels, we get to do Christ's work of feeding and visiting our homebound neighbors. We are so grateful for all of our volunteers' service! We are looking for a few additional volunteers to deliver meals regularly and on a substitute basis. Please give this volunteer opportunity your thoughtful and prayerful consideration. It means so much to those being served. If you are interested or want more information, please contact me at 302-328-7346 or email me at suzieflook@hotmail.com. Thank you! Susan Flook, Meals on Wheels Coord.

Prayer List:

To place a name on the confidential Prayer Chain, contact Susan Flook, 302-328-7346 suzieflook@hotmail.com

Continuing Care Homes / Hospitals:

Joan Smith

Kentmere Rehab & HC
1900 Lovering Avenue
Wilmington, DE 19806

Rod Denison

Cadia Rehab Capitol
1225 Walker Road
Room 132A Holly Unit
Dover, DE 19904

At Home:

Kathy Griffin-Graham

323 Oregon Avenue
New Castle, DE 19720
(302) 324-9944

Anita Johnson

Cokesbury
HealthCare Rm 2006
726 Loveville Road,
Hockessin, DE 19707

Janet Reed

106 Colesbery Drive
New Castle, DE 19720
(302) 328-6749

Mary Duncan

1323 Richard's Alley
Wilmington, DE 19806
(302) 888-0282

Linda Twyford

New Castle Nursing & Rehab
32 Buena Vista Dr,
New Castle, DE 19720
(302) 328-2580

Judy Hentkowski

128 E. 2nd Street
New Castle, DE 19720
(302) 328-8266

Robert Lindfors

202 Brylgon Ave.
New Castle, DE 19720
(302) 328-5369

On Assignment with the Coast Guard:

George Spock

USCGC Scheuerman
PSC 851 P.O. Box 11620
FPO AE, 09834

On Assignment with the Air Force:

James Boyle

1150 Bole Street, Unit 54
JBPHH, HI 96860

This Week's Schedule

SUNDAY	09/03	10:30am	In-Person & Live Stream Worship
		11:30am	Sidewalk Coffee Hour
Monday	09/04		LABOR DAY OFFICE CLOSED
Tuesday	09/05	7:00pm	Session Meeting
Wednesday	09/06		BROWNIES DUE!
		7:30pm	Choir
Thursday	09/07	9:15am	Emmanuel Dining Room Prep
		7:00pm	Celebration Ringers
Saturday	09/09	8:00am	Tai Chi
SUNDAY	09/10	10:30am	In-Person & Live Stream Worship & Backpack Blessing, Installation of Officers
		10:45am	Sunday School
		11:30am	Coffee Hour
		11:45am	Deacons Meeting

Pastor Miriam will be out of the office on Friday, September 8.

All printed music & performances are covered under

OneLicense #A-720755 Used by permission

New Castle Presbyterian Church

25 E. 2nd Street
New Castle, DE 19720

Phone: (302) 328-3279

Fax: (302) 328-5670

E-mail: office@newcastlepreschurch.org

Pastor E-mail: pastor@newcastlepreschurch.org

Website: www.newcastlepreschurch.org

Rev. Miriam Foltz, Pastor

Kris Krawczyk, Admin. Assistant

Eileen Larkin, Dir. of Music

Dan Knox, Treasurer

Minerva Lermond, Dir. of Handbells

Shirley Knox, Recording Secretary

Bethany Faiz, Accompanist

SESSION

2023	2024	2025
Candy Dunson	Rob Barry	Melissa Boris
Steve Martin	Chris Fagles	Jennifer Dunham
Beverly Stoudt	Greg Fogarty	Connie Reese
Jim Whisman	Scott Selheimer	

Session meets the 1st Tuesday of the month

DEACONS

2023	2024	2025
Lindy Ballance	Susan Fogarty	Toni Marley
Liz Toto	Julia Spock	Janet Spring
Conchita Showell	Sandy Wilson	

Deacons meet the 2nd Sunday of the month

TRUSTEES

2023	2024	2025
Dan Dunson	Lyn Briggs	Marshall Freund
Mary Fontinha	Gary Graham	Mike Smith
Gail Seitz	Barbara Whisman	

Trustees meet the 3rd Monday every other month (Sept/Nov/Jan/Mar/May)

